



DISTRIBUTOR EQUIPMENT PRICING



DRUM & TOTE COMPATIBLE

REQUIRES DRUM/TOTE SPECIFIC COUPLER



DEF756-008B
DRUM DISPENSER COUPLER

BEDEFPTDC
TOTE DISPENSER COUPLER

1/3 HP DIAPHRAGM PUMP



POLYPROPYLENE MANUAL NOZZLE: Self priming, dual voltage 115v60Hz, flow rate of 7-9gpm, polypropylene manual nozzle, 4' suction hose, stainless steel pump bracket, kite includes clamps for attaching hoses. **DRUM NOT INCLUDED.**

STAINLESS STEEL AUTOMATIC SHUT-OFF NOZZLE: Self priming, dual voltage 115v60Hz, flow rate of 7-9gpm, 4' suction hose, stainless steel pump bracket, kit includes clamps for attaching hoses. **DRUM NOT INCLUDED.**

[Click here to learn more about this product](#)

PART #	HOSE LENGTH	
DEFTB10MN (with Plastic Nozzle)	10'	\$463.75
DEFTB20MN (with Plastic Nozzle)	20'	\$493.75

DEFTB10SN (with SS Nozzle)	10'	\$618.75
DEFTB20SN (with SS Nozzle)	20'	\$643.75



12V PORTABLE DIAPHRAGM PUMP

Self priming, 12 Volt DC, flow rate of 6-8gpm, 12' power cord, polypropylene pump housing, stainless steel auto shut-off nozzle, 4' suction hose, carbon steel pump caddy, kit includes clamps for attaching hoses. **DRUM NOT INCLUDED.**

[Click here to learn more about this product](#)

PART #	HOSE LENGTH	
DEF12V10SN	10'	\$797.50
DEF12V20SN	20'	\$823.75
DEF12V30SN	30'	\$857.50

TOTE COMPATIBLE

REQUIRES TOTE SPECIFIC COUPLER



BEDEFPTDC
TOTE DISPENSER COUPLER



3/4 HP CENTRIFUGAL PUMP

On/off function is controlled by nozzle, time-out function, dual voltage 115/230v60Hz, flow rate of 8-10gpm, stainless steel auto shut-off nozzle, 4' suction hose, stainless steel pump bracket, kit includes clamps for attaching hoses. **TOTE NOT INCLUDED.**

[Click here to learn more about this product](#)

PART #	HOSE LENGTH	
DEFTBCSS10	10'	\$701.25
DEFTBCSS20	20'	\$730.00

DRUM COMPATIBLE



PISTON HAND PUMP

Industrial grade polypropylene housing, flow rate 6gpm, 10' dispensing hose, manual nozzle with locking pin, includes 2" bung adapter. Should only be used on BlueDEF drums with plastic valves. NOTE: This pump does not utilize the micromatic adapter or fitting. **DRUM NOT INCLUDED.**

PART #	
DEFR12068010	\$181.25



MOBILE DRUM CART

With 1/3 HP Diaphragm Pump: Self priming, dual voltage 115v60Hz, flow rate of 7-9gpm, stainless steel automatic shut-off nozzle, 4' suction hose, kit includes clamps for attaching hoses. **DRUM NOT INCLUDED.**

With 12V Pump: Self priming, 12 Volt DC, flow rate of 6-8gpm, 12' power cord, polypropylene pump housing, stainless steel auto shut-off nozzle, 4' suction hose, kit includes clamps for attaching hoses. **DRUM NOT INCLUDED.**

Cart Only

PART #	HOSE LENGTH	
DEFTB10SN-MC	10'	\$1,077.50
DEFTB20SN-MC	20'	\$1,105.00

DEF12V20SN-MC	20'	\$1,113.75
---------------	-----	------------

DEF-MC	\$510.00
--------	----------



DRUM & TOTE ACCESSORIES



STAINLESS STEEL DRUM COUPLER

Stainless steel EPV dispensing coupler with EPDM seals that connects to the hose of a pump to pump DEF from the container. This connects to the DEF755-003 drum container valve. Used for dispensing only. Self-venting with a stainless steel 70 micron filter.

PART #

DEF756-008B

\$88.75



STAINLESS STEEL TOTE COUPLER

Stainless steel RSV dispense coupler with VITON seals and 3/4" hose barb outlet which attaches to the suction side of pump hose. Used to connect to container valve for closed system dispensing. This is a self venting coupler and allows atmospheric air into the container.

DEF744-048

\$131.25



POLY TOTE COUPLER

Allows hose connection to 3/4" hose barb outlet which attaches to the suction side of pump hose. Used to connect to container valve for closed system dispensing. This is a self venting coupler and allows atmospheric air into the container. Cross compatible with stainless steel valves.

BEDEFPTDC

\$71.25



DEF AUTOMATIC SHUT-OFF NOZZLE

Rugged design for long life and reliable service. 19mm nozzle spout, stainless steel main stem, durable lever and lever guard for additional durability.

DEFSN

\$232.50



FLOW METER ASSEMBLY

Accurately measures fluid usage. (Non weights and measures). Reinforced polyamide body, threaded input/output, totalizer, flow indication. Runs on 2 AAA batteries (included). Measures gallons or liters.

DEFFM

\$160.00



INSULATED HEAT BLANKET PROTECTS TO -30°

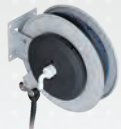
Patented heat spreading technology. Protects BlueDEF fluid and pump assembly from freezing. Works on both metal and poly totes. Unique design allows for easy access to dispensing equipment. UV, wind and water resistant. Certified to UL/CSA standards. 120V 60Hz and 12V options. 1440 watts, amperage 12A, resistance 10.0 ohms.

DEFTH275BD-A
275 GALLON

\$2,207.50

DEFTH275BD-A
330 GALLON

\$2,643.75



HOSE REEL

Open design allows for easy maintenance. Stores hose up and out of harm's way, greatly extending service life of hose. 3/4" I.D. hose. All BlueDEF hoses are made of sulfur free EPDM rubber that meets ISO 22241 guidelines for use with DEF fluid.

DEFHR25HOSE
25' HOSE

\$581.25

DEFHR50HOSE
50' HOSE

\$1,196.25

DEFHR75HOSE
75' HOSE

\$1,622.50

DEFHR100HOSE
100' HOSE

\$1,752.50

3/4" DEF HOSE

Peroxide cured EPDM rubber compound, anti-static. All BlueDEF hoses are made of sulfur free EPDM rubber that meets ISO 22241 guidelines for use with DEF fluid.

DEF510COM-HOSE1
10' HOSE

\$70.00

DEF510COM-HOSE2
20' HOSE

\$103.75

DEF510COM-HOSE3
30' HOSE

\$136.25

DEF510COM-HOSE4
40' HOSE

\$168.75



POLY VALVE & SPRING LOADED STRAIGHT DOWNTUBE

Fully Assembled, poly valve and HPDE spring loaded straight downtube, thicker material, ISO 22241 compliant, 5 year warranty. Cross compatible with stainless steel couplers. **MINIMUM QUANTITY OF 25.**

BEDEFVD559
55 GALLON DRUM

\$21.25

BEDEFVD275P
275 GALLON TOTE

\$21.25

BEDEFVD330P
330 GALLON TOTE

\$21.25

DRUM & TOTE ACCESSORIES



DRUM & TOTE ACCESSORIES



EPV CONTAINER VALVE

Plastic EPV container valve that threads into a drum with the 2.5"x 5 buttress thread with EPDM seals. **MINIMUM QUANTITY OF 25.**

PART #

DEF755-003

\$10.00

EPV DOWN TUBE

HPDE down tube for use with the EPV drum container valve 743-016, 743-096, 743-097. This tube is cut for a 55 gallon HPDE drum. 810mm length, 1" diameter. **MINIMUM QUANTITY OF 50.**

DEF102-136/805

\$1.25



RSV CONTAINER VALVE

Stainless steel RSV container valve with EPDM seals that threads into an IBC or drum. The American buttress thread is the heavy thread that is used for plastic drums and IBC's with the correct plastic lid. This is the container valve only and no down tube is attached. For use with 744-048, 744-026. **MINIMUM QUANTITY OF 36.**

DEF743-097

\$35.00

RSV DOWN TUBE

HPDE down tube for use with stainless steel RSV container valve 743-016, 743-096, 743-097. This tube is cut for a IBC center cap installation. 1245mm length, 1" diameter. **MINIMUM QUANTITY OF 50.**

DEF743-236/1065
275 GALLON TOTE

\$5.00

DEF743-236/1245
330 GALLON TOTE

\$5.00



RSV TAMPER EVIDENT WIRE SEAL

Tamper evident wire cable for the stainless steel RSV container valve. Secures RSV container valve to container and protects from unauthorized removal. **MINIMUM QUANTITY OF 100.**

ZTFSEAL

\$2.50



RSV DUST COVER

Reusable dust cover used to protect container valve from debris when coupler is disconnected. (NON-tamper evident). **MINIMUM QUANTITY OF 25.**

DEF102-014

\$1.25



DEF TOTE CAP

For 275 or 300 gallon totes.

DEF230248

\$18.75



BULK FILL COUPLER

2" dry disconnect coupler, heavy-duty SS crank & link, secure connection to fill BlueDEF Mini Bulk System and Bulk Storage Systems.

DEFMB-FILL

\$1,331.25



RSV FILL COUPLER

Stainless steel RSV Fill Coupler with VITON seals and a 1" NPT male liquid inlet. Used to connect RSV container valve for closed system filling. For use with RSV container valves 743-097.

DEF744-062

\$193.75

BULK DISPENSING SYSTEMS



MOBILE TRUCK TANK

- + 12V diaphragm pump
- + Portable dispensing unit
- + 20' dispense hose
- + Forklift recesses
- + Stainless steel automatic shut-off nozzle
- + Integrated carry handles
- + Molded recesses for tie-down during transport
- + 110 gallon or 155 gallon

[Click here to learn more about this product](#)

PART #

SIZE IN GALLONS

DEFTTP110

110

\$2,236.25

DEFTTP155

155

\$2,606.25

BULK DISPENSING SYSTEMS



MINI BULK TANK

- + Ability to expand from 500 gallon to 1000 gallon unit
- + Automated fill-port valve to prevent overfilling
- + High-level indicator
- + Forklift pockets for relocation
- + Weather-tight control panel mounted on front wall
- + Pre-wired for easy installation
- + Low level tank indicators
- + 1/2HP submersive DEF pump(s)
- + Dry-break adapter fill port
- + Lockable fill port door

[Click here to learn more about this product](#)

TANK SIZE	W x H x L	WEIGHT
500	36" x 107" (48" + 6" control box)	~800 lbs
1,000	36" x 107" (96" + 6" control box)	~1600 lbs

TANK ONLY	
DEF500MB	\$11,116.25*
DEF1000MB	\$16,675.00*

TANK WITH HEAT OPTION	
DEF500MB-H	\$11,438.75*
DEF1000MB-H	\$17,320.00*

MINI BULK SYSTEM WITH FLEET DISPENSER NON WEIGHTS AND MEASURES

- + Stainless steel automatic nozzle with swivel
- + Nozzle holder
- + Turbine meter with hose adapters
- + Filter housing and cartridge
- + Powder coated carbon steel cabinet
- + Foil face insulation lining
- + Hardware for installation including anchor kit
- + Hose reel with 25' DEF hose, ball stop & 4-way roller



W x H x L WEIGHT
63" x 32" x 32" 325 lbs

FLEET DISPENSER ONLY	TANK WITH FLEET DISPENSER	TANK WITH HEAT & FLEET DISPENSER
\$3,900.00*	\$14,493.75*	\$15,063.75*
DEFFD	DEF500MB-F	DEF500MB-FH
	\$20,051.25*	\$20,947.50*
	DEF1000MB-F	DEF1000MB-FH

MINI BULK SYSTEM WITH RETAIL DISPENSER WEIGHTS AND MEASURES

- + Weights & measures approved TES-682 SS meter
- + Retail software electronics
- + Pulse output
- + 1-Michron filter assembly
- + DEF hose reel with 18' DEF hose
- + Insulated & heated



W x H x L WEIGHT
58" x 32" x 20" 450 lbs

RETAIL DISPENSER ONLY	TANK WITH RETAIL DISPENSER	TANK WITH HEAT & RETAIL DISPENSER
TBA	\$25,922.50*	\$26,245.00*
	DEF500MB-R	DEF500MB-RH
	\$31,482.50*	\$32,126.25*
	DEF1000MB-R	DEF1000MB-RH

AVAILABLE FLEET DISPENSER OPTIONS:

HEAT DEFDSPT \$262.50	PULSE OUTPUT DEFPLSOUT \$650.00	115V PUMP TBA	AUTO ON/OFF SUBMERSIVE PUMP FEATURE DEFPI9 \$431.25	STAINLESS STEEL BREAKAWAY DEFSSBRK \$243.75
--------------------------	------------------------------------	------------------	--	--

* This quote is for equipment only. It does not include freight or installation services. Freight and installation can be quoted upon request. The price excludes sales tax. Prices are subject to change upon written notice.

BULK STORAGE SYSTEMS - INDOOR



INDOOR STORAGE TANK WITH RECOMMENDED FITTING PACKAGE

- + DEF compatible HPDE vertical tank - single wall
- + 2" stainless steel threaded bulk head fitting - sidewall
- + 1" stainless steel threaded bulk head fitting - sidewall
- + (2) 2" polypropylene threaded top mount fittings
- + Non-vented manway
- + 1" x 12" siphon tube
- + 2" stainless steel inlet for fill port and cap
- + (2) stainless steel ball valves and nipples
- + Duplex vent package (rated for 25 gpm)
- + Duplex vent filtration sock
- + DEF pipe sealant
- + Optional: Insulated & heated tank packages

INDOOR DISPENSING SYSTEM FOR INDOOR STORAGE TANK

- + DEF pumping system with wall mount and filter
- + 25' hose reel with stainless steel automatic shut-off nozzle
- + Must be within 10' of tank when using smart pump



OUTDOOR DISPENSING SYSTEM FOR INDOOR STORAGE TANK

- + DEF pumping system with 25' hose reel
- + Nozzle mounted flow meter (non weights and measures)
- + Stainless steel automatic shut-off nozzle
- + Must be within 10' of tank when using smart pump



TANK SIZE (Gallons)	W x H x L (Inches)	WEIGHT (Pounds)	TIP UP	TANK ONLY	TANK WITH INDOOR DISPENSING SYSTEM	TANK WITH OUTDOOR DISPENSING SYSTEM
500	48" x 73"	~180 lbs	80"	\$2,363.75*	\$4,681.25*	\$7,466.25*
1,000	65" x 81"	~275 lbs	103"	\$3,065.00*	\$5,241.25*	\$7,896.25*
2,100	87" x 89"	~400 lbs	125"	\$4,048.75*	\$6,225.00*	\$8,623.75*
3,000	95" x 109"	~600 lbs	145"	\$4,377.50*	\$6,502.50*	\$8,910.00*
6,500	119" x 150"	~1,151 lbs	192"	\$6,638.75*	\$8,627.50*	\$11,848.75*
8,400	119" x 188"	~2,135 lbs	223"	\$8,601.25*	\$10,588.75*	\$13,810.00*

* This quote is for equipment only. It does not include freight or installation services. Freight and installation can be quoted upon request. The price excludes sales tax. Prices are subject to change upon written notice.

BULK STORAGE SYSTEMS - OUTDOOR



OUTDOOR STORAGE TANK WITH RECOMMENDED FITTING PACKAGE

- + DEF compatible HPDE vertical tank
- + 2" stainless steel threaded bulk head fitting - sidewall
- + 1" stainless steel threaded bulk head fitting - sidewall
- + (2) 2" polypropylene threaded top mount fittings
- + Non-vented manway
- + 1.5" x 12" siphon tube
- + 2" stainless steel inlet for fill port
- + Insulation package
- + Heat trace package
- + Submersive DEF package

OUTDOOR STORAGE TANK WITH FLEET DISPENSING SYSTEM

- + Industrial grade cabinet
- + Insulated with heating system
- + K-23 flow meter
- + Filter
- + 25' DEF hose reel



OUTDOOR STORAGE TANK WITH RETAIL DISPENSING SYSTEM

- + Industrial grade cabinet
- + Insulated with dual heat
- + Volume only software electronics
- + Pulse output
- + Filter
- + Hose reel with 25' DEF hose
- + Positive displacement oval gear with stainless steel flow meter



TANK SIZE (Gallons)	W x H (Inches)	WEIGHT (Pounds)	TANK ONLY	TANK WITH FLEET DISPENSING SYSTEM	TANK WITH RETAIL DISPENSING SYSTEM
1,100	66" x 92"	~650 lbs	TBA	\$18,611.25*	\$25,430.00*
2,000	92" x 90"	~800 lbs	TBA	\$19,962.50*	\$26,556.25*
3,000	90" x 127"	~950 lbs	TBA	\$23,612.50*	\$30,431.25*
6,500	120" x 153"	~3,550 lbs	TBA	\$30,457.50*	\$36,773.75*
8,000	120" x 186"	~4,350 lbs	TBA	\$38,802.50*	\$42,770.00*

* This quote is for equipment only. It does not include freight or installation services. Freight and installation can be quoted upon request. The price excludes sales tax. Prices are subject to change upon written notice.

BULK TRANSFER SYSTEMS



50 GPM SKID TRANSFER

\$28,571.25*

Pump & Motor

- + Stainless steel, self-priming 2HP pump
- + 100/208 VAC, single phase, 60Hz, TEFC motor

Control Panel

- + ON/OFF (green/red) Start & Stop button
- + 240 VAC x 12 VDC power supply
- + Panel mount power disconnect
- + Magnetic motor starter with overload contact
- + 25' ten gauge 3-wire power cord with plug

Meter System

- + 304 stainless steel LC turbine meter
- + Stainless steel pulse amplifier
- + Stainless steel air eliminator
- + LCR-II electronic register
- + Epson slip printer housed in weather proof enclosure
- + 1.5 electrical actuated ball valve

OPTIONAL:

5000 WATT GAS GENERATOR

\$3,258.75

Hose Assembly

- + 1.5" carbon steel chrome plated hose reel
- + 110 VAC electric rewind
- + All stainless steel wetted components
- + 4-way roller assembly
- + 1.5" x 50' DEF discharge hose with stainless steel MNPT ends

Filtration

- + 304 stainless steel 3 round, 4 high filter housing
- + V-band clamp closure
- + (2) Stainless steel liquid filled pressure gauges
- + (2) Drain valves
- + (3) Absolute 1-michron melt-blown filters



45 GPM SKID TRANSFER

\$25,767.50*

Pump & Motor

- + Polypropylene construction
- + Self-priming, mag drive centrifugal pump
- + 120V, 240VAC, 60Hz, single phase motor
- + Motor started with overload protection
- + 10/3 x 25' electrical core with plug

Hose Assembly

- + Hannay spring rewind hose reel
- + Includes 4-way roller & stainless steel internal water ways
- + 1.5" x 50' DEF discharge hose with stainless steel MNPT ends
- + 1.5" x 20' DEF suction hose with stainless steel MNPT ends

Meter & Register

- + Positive displacement piston meter
- + Mechanical register & ticket printer
- + Stainless steel air eliminator
- + Spit tank with "T" strainer with stainless steel cap

Filtration

- + 7 round, 3 high stainless steel filter housing
- + V-band clamp
- + (2) Test ports with ball valves
- + (2) PSI gauges
- + (7) Absolute 1-michron 30" filters

30 GPM MECHANICAL DOLLY

\$9,620.00*



Pump & Motor

- + 1/2 HP flooded suction SS centrifugal pump
- + Mechanical pump seal
- + 110 VAC single phase 60Hz motor
- + Toggle switch manual motor starter - 25' x 14/3
- + Gauge electrical cord with 120V AC

Meter & Registry

- + Piston flow meter with mechanical register
- + SSI air eliminator with vinyl tube attached for discharge
- + Mechanical ticket printer
- + Weights and measures approved

Hose Assembly

- + 1" x 10' suction hose with stainless steel MNPT ends
- + 1" x 20' discharge hose with stainless steel MNPT ends
- + Hose hangers for both suction and discharge lengths

30 GPM ELECTRONIC DOLLY

\$13,517.50*



Pump & Motor

- + 1/2 HP flooded suction SS centrifugal pump
- + Mechanical pump seal
- + 110 VAC single phase 60Hz motor
- + Toggle switch manual motor starter - 25' x 14/3
- + Gauge electrical cord with 120V AC

Meter & Registry

- + Piston flow meter with mechanical register
- + SSI air eliminator with vinyl tube attached for discharge
- + Mechanical ticket printer
- + Weights and measures approved

Hose Assembly

- + 1" x 10' suction hose with stainless steel MNPT ends
- + 1" x 20' discharge hose with stainless steel MNPT ends
- + Hose hangers for both suction and discharge lengths

OPTIONAL:

POLYPROPYLENE FILTER HOUSING WITH 1-MICHRON FILTER & VENT

\$167.50

POLY SPLIT TANK FOR AIR ELIMINATOR DISCHARGE

\$101.25

SELF-PRIMING PUMP

\$383.75

OPTIONAL:

POLYPROPYLENE FILTER HOUSING WITH 1-MICHRON FILTER & VENT

\$167.50

POLY SPLIT TANK FOR AIR ELIMINATOR DISCHARGE

\$101.25

SELF-PRIMING PUMP

\$383.75